

CE
0120



Dual Top[®] ANCHOR SYSTEM

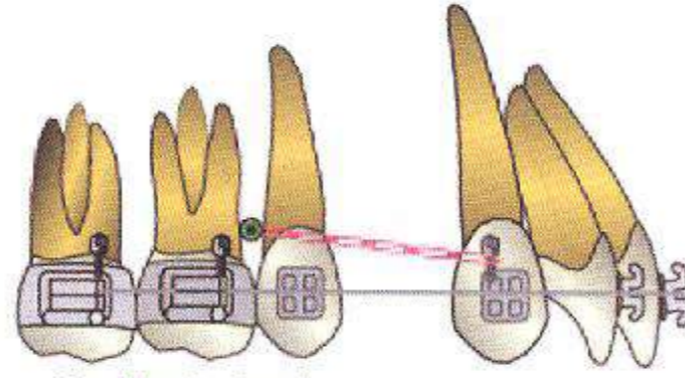
Self Drilling & Self Tapping



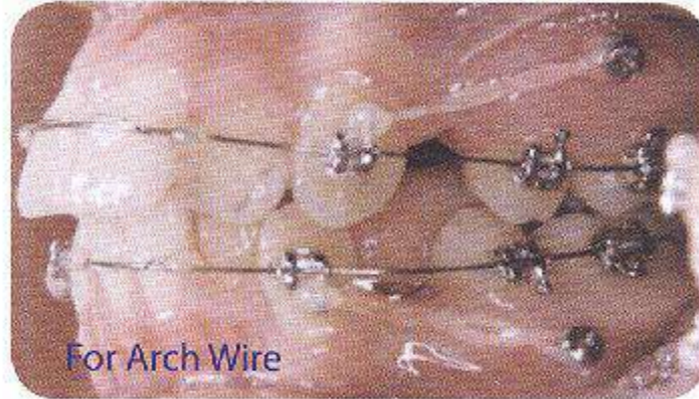
JEIL MEDICAL
CORPORATION



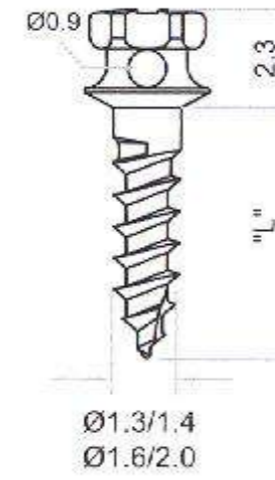
JA screw



For Elastic Band



For Arch Wire



Code	Screw Diameter	Length(L)
13-JA-005H	Ø1.3	5
13-JA-006H	Ø1.3	6
13-JA-008H	Ø1.3	8
14-JA-006H	Ø1.4	6
14-JA-008H	Ø1.4	8
14-JA-010H	Ø1.4	10
16-JA-006H	Ø1.6	6
16-JA-008H	Ø1.6	8
16-JA-010H	Ø1.6	10
20-JA-006H	Ø2.0	6
20-JA-008H	Ø2.0	8
20-JA-010H	Ø2.0	10



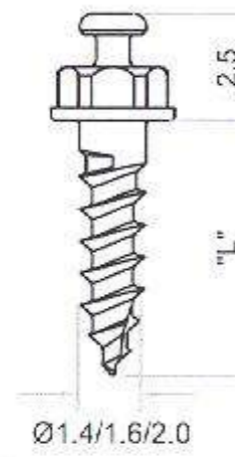
JB screw



For NiTi Spring



For Elastic Band



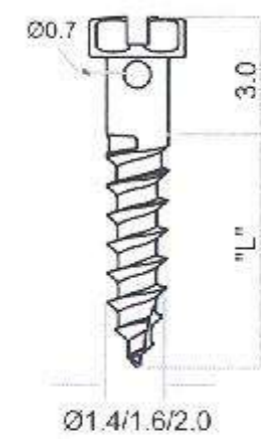
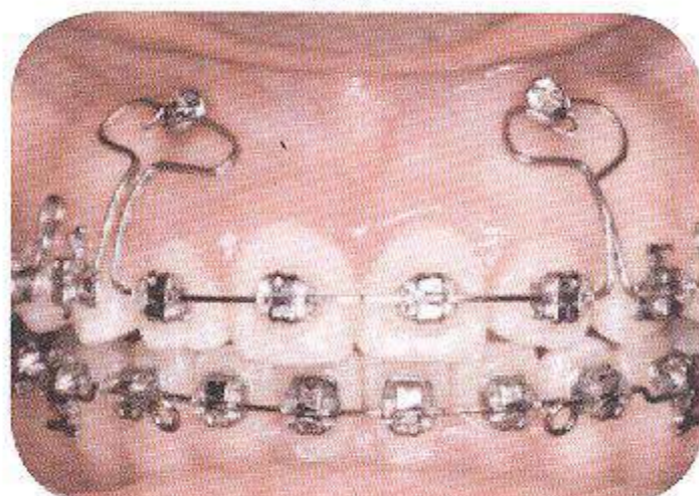
Code	Screw Diameter	Length(L)
14-JB-006	Ø1.4	6
14-JB-008	Ø1.4	8
16-JB-006	Ø1.6	6
16-JB-008	Ø1.6	8
16-JB-010	Ø1.6	10
20-JB-006	Ø2.0	6
20-JB-008	Ø2.0	8
20-JB-010	Ø2.0	10



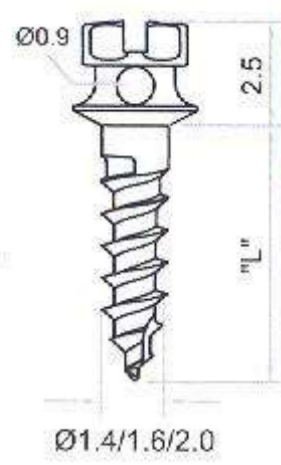
G1 screw



For Arch Wire
0.22x0.028 inch



Code	Screw Diameter	Length(L)
14-G1-006	Ø1.4	6
14-G1-008	Ø1.4	8
16-G1-006	Ø1.6	6
16-G1-008	Ø1.6	8
16-G1-010	Ø1.6	10
20-G1-006	Ø2.0	6
20-G1-008	Ø2.0	8
20-G1-010	Ø2.0	10



Code	Screw Diameter	Length(L)
14-G2-006	Ø1.4	6
14-G2-008	Ø1.4	8
16-G2-006	Ø1.6	6
16-G2-008	Ø1.6	8
16-G2-010	Ø1.6	10
20-G2-006	Ø2.0	6
20-G2-008	Ø2.0	8
20-G2-010	Ø2.0	10



For Arch Wire
0.022x0.028 inch



G2 screw



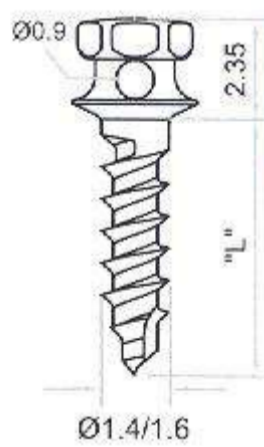
Code	Screw Diameter	Length(L)
14-JD-006	Ø1.4	6
14-JD-008	Ø1.4	8
16-JD-006	Ø1.6	6
16-JD-008	Ø1.6	8
16-JD-010	Ø1.6	10
20-JD-006	Ø2.0	6
20-JD-008	Ø2.0	8
20-JD-010	Ø2.0	10



For Arch Wire
0.022x0.028 inch

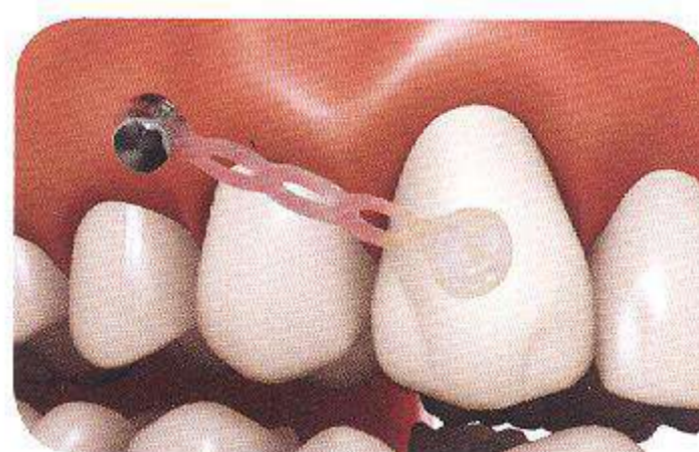


JD screw

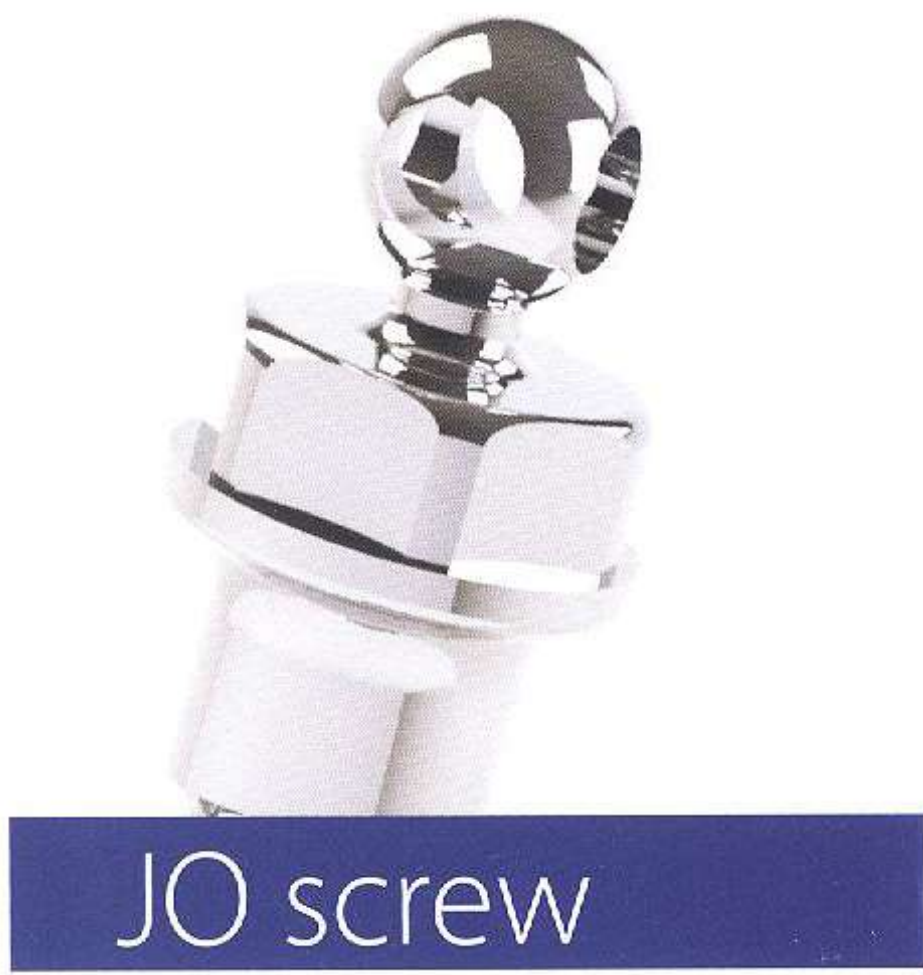


Code	Screw Diameter	Length(L)
14-JF-006	Ø1.4	6
14-JF-008	Ø1.4	8
16-JF-006	Ø1.6	6
16-JF-008	Ø1.6	8

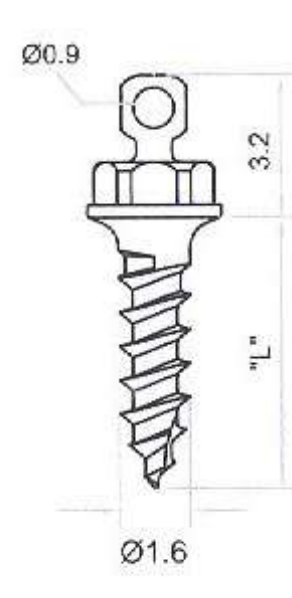
Smooth Head



JF screw



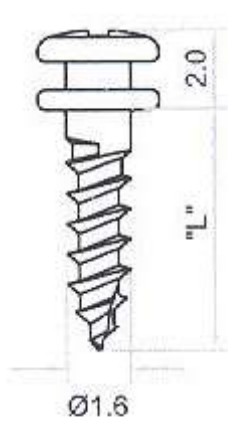
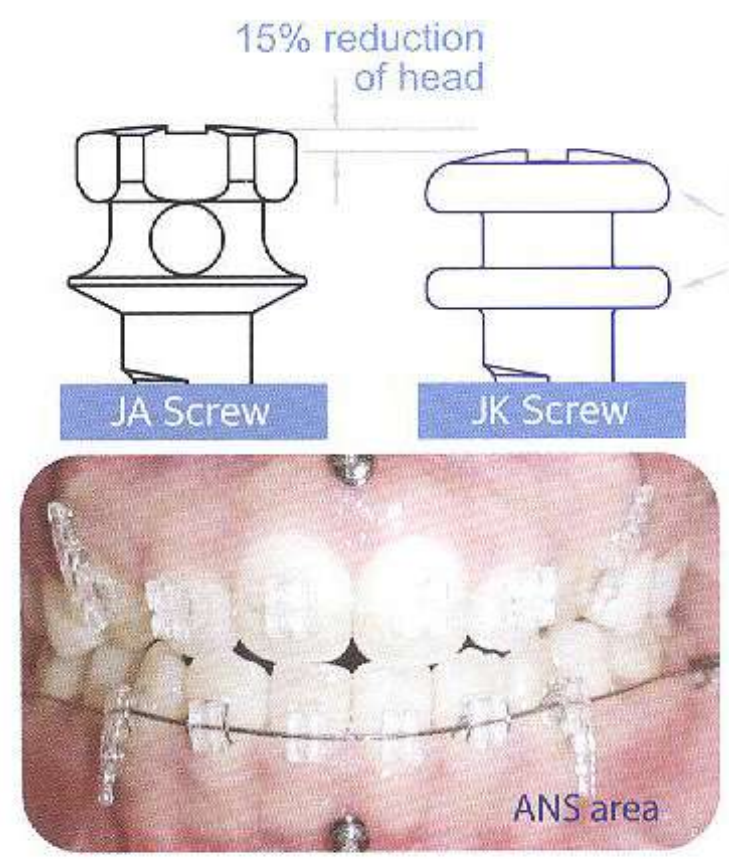
JO screw



Code	Screw Diameter	Length(L)
16-JO-006	Ø1.6	6
16-JO-008	Ø1.6	8
16-JO-010	Ø1.6	10



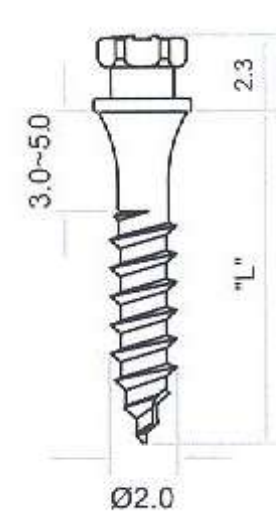
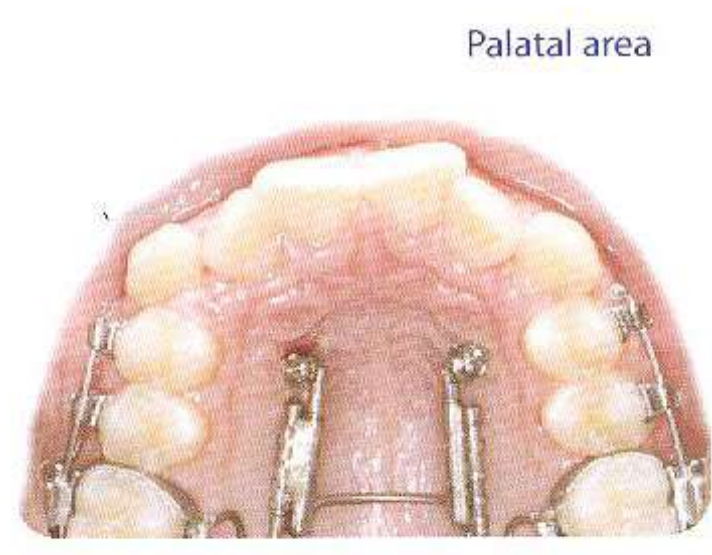
JK screw



Code	Screw Diameter	Length(L)
16-JK-006	Ø1.6	6
16-JK-008	Ø1.6	8












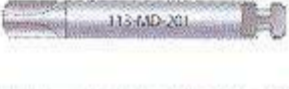


JS screw



Code	Screw Diameter	Length(L)
20-JS-010	Ø2.0	10
20-JS-012	Ø2.0	12

Driver Shaft

Driver Shaft for Screwdriver Handle	Code	Applicable Screw										Length
		JA	JB	JD	G1	G2	JK	JF	JO	JS		
	113-MJ-103	•		•		•		•		•		70mm
	113-JB-101		•								•	70mm
	113-MD-101	•						•				70mm
	113-GD-101				•	•						70mm

Driver Shaft for Contra Angle	Code	Applicable Screw										Length
		JA	JB	JD	G1	G2	JK	JF	JO	JS		
	113-MJ-203	•		•		•		•		•		20mm
	113-MJ-204	•		•		•		•		•		28mm
	113-MJ-202	•		•		•		•		•		40mm
	113-JB-201		•								•	25mm
	113-JB-202		•								•	40mm
	113-MD-201	•						•				20mm
	113-GD-201				•	•						20mm
	113-GD-211				•	•						40mm

Drill (Ø1.0)	Code	Applicable Screw										Length
		JA	JB	JD	G1	G2	JK	JF	JO	JS		
	112-MC-201	•	•	•	•	•	•	•	•	•	•	28mm

Screwdriver Handle	Code	Applicable Screw										Length
		JA	JB	JD	G1	G2	JK	JF	JO	JS		
	111-010	•	•	•	•	•	•	•	•	•	•	110mm

Instruments



Screw Block 112-060



Screw Block 112-070



Screw Block 112-062

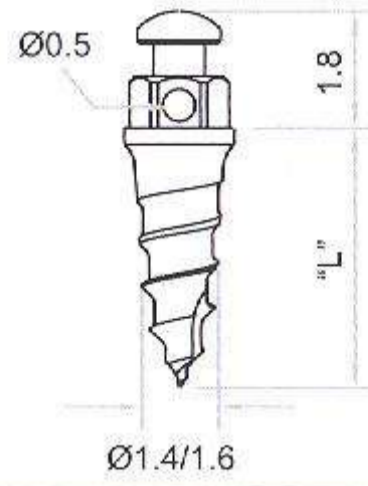


Screw Block 112-071



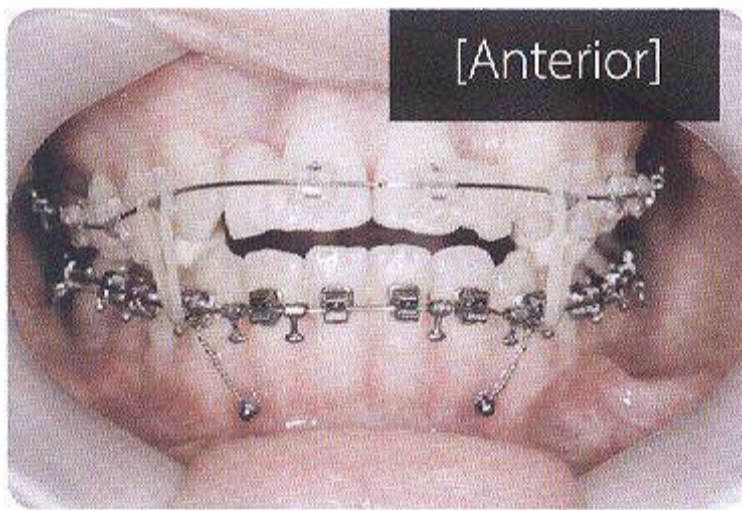
MIM Block 112-073

MIM Screw Minimally Invasive Mini-Implant Screw



Code	Thread Diameter	Thread Length (L)
14-MIM-006	Ø1.4	6mm
14-MIM-008		8mm
16-MIM-006	Ø1.6	6mm
16-MIM-008		8mm

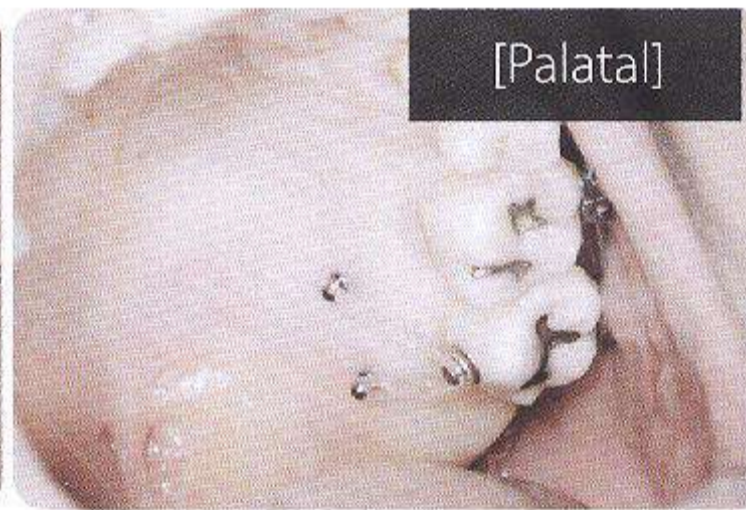
Instrument	Code	Length
	113-MIM-101	70mm
	113-MIM-202	40mm
	113-MIM-201	20mm



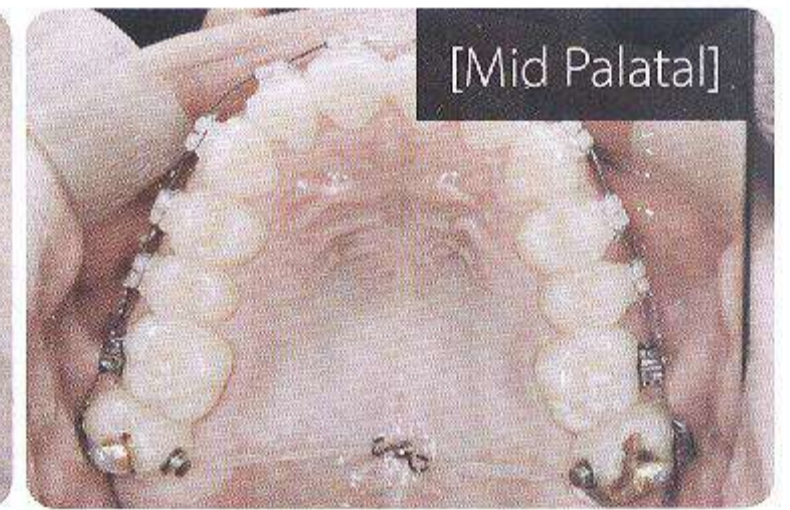
[Anterior]



[Buccal]



[Palatal]

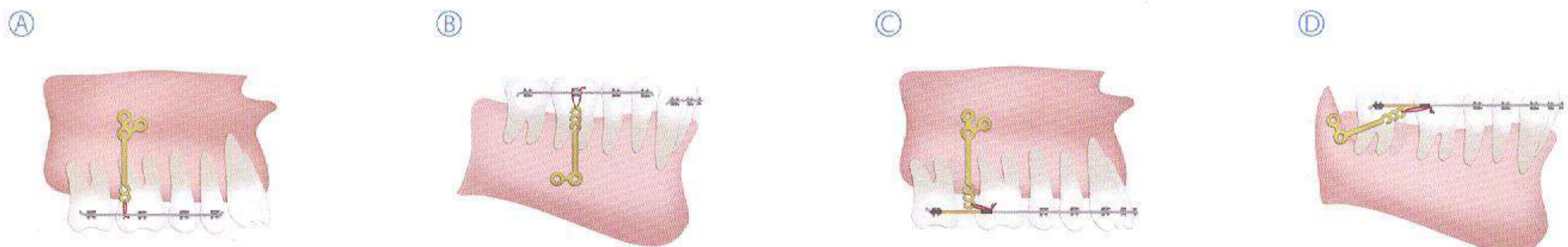


[Mid Palatal]

Anchor Plate

New Orthodontic Anchor Plates

Anchor plate is developed to provide intraoral absolute anchorage for the intrusion or distalization of molars.



T-L Type

- AP-TL-010
- AP-TL-013
- AP-TL-016



Y-L Type

- AP-YL-010
- AP-YL-013
- AP-YL-016



T-R Type

- AP-TR-010
- AP-TR-013
- AP-TR-016



Y-R Type

- AP-YR-010
- AP-YR-013
- AP-YR-016



T-S Type

- AP-TS-010S
- AP-TS-010M
- AP-TS-010L

T-M Type

- AP-TM-013S
- AP-TM-013M
- AP-TM-013L

T-L Type

- AP-TL-016S
- AP-TL-016M
- AP-TL-016L

NiTi Spring



NCS0105

Force : L, M, H
Length : 8, 13



NCS0106

Force : M
Length : 8



NCS0505

Force : M, H
Length : 8, 13

Orthonia

High-performing, battery-powered torque driver used for medical purposes
Prevents screw from fracturing during the medical procedures



Driver Holder (Straight Type, Included))

Accurate rotation axis, No Wobbling rotation,
High success rate of mini implant fixation
Accurate torque limit control, prevention of
screw fracturing



Driver Holder (Angle Type)

111-AN-020 (Optional)

Easy approach to difficult areas to reach
360 degree rotation of hand piece
Reduction of chair time

Driver Holder
(Straight type)



Driver Holder
(Straight type)



111-ED-040

Speed level(rpm) : 30 / 40 / 50
Torque : 10N-cm, 15N-cm, 20N-cm,
25N-cm, 30N-cm

111-ED-010

Speed level(rpm) : 15 / 20
Torque : 15N-cm, 20N-cm, 30N-cm



Lingual Driver 111-LD-020

Through its revolutionary one-hand control system, User can easily approach the most difficult implanting areas of maxillary and mandible jaw bone.



—

Head Office



JEIL MEDICAL CORPORATION
#702 Kolon Science Valley 2nd, 55,
Digital-ro 34(Previously 811, Guro-dong),
Guro-gu, Seoul, Korea

Tel : 82.2.850.3504 Fax: 82.2.850.3537
www.jeilmed.co.kr
E-mail: global@jeilmed.co.kr

—